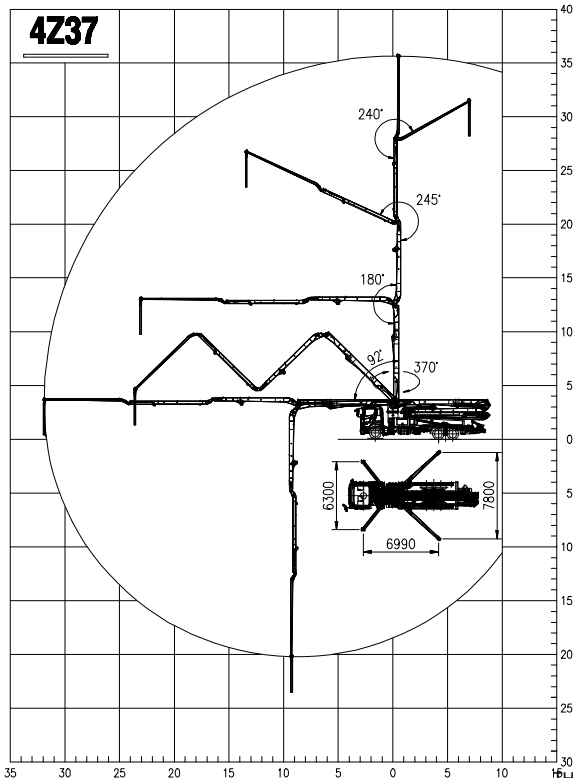
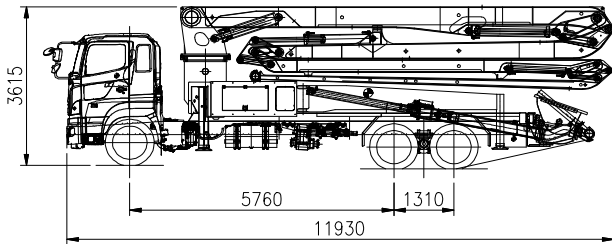


# 4Z37



## ■ DIMENSIONS & WORKING RANGE



## ■ BOOM

|                        |                     |
|------------------------|---------------------|
| Boom type              | 4-section<br>Z-Boom |
| Vertical reach         | 36.2m               |
| Horizontal reach       | 32.2m               |
| End hose length        | 4m                  |
| Delivery pipe diameter | 125mm(5")           |
| Slewing range          | 370°                |
| 1st section length     | 9,100mm             |
| 2nd section length     | 7,700mm             |
| 3rd section length     | 7,700mm             |
| 4th section length     | 7,700mm             |

## ■ OUTRIGGER

|                     |   |
|---------------------|---|
| Front Outrigger     | One Stage Diagonal Extension<br>Full Spread Width 6,300mm |
| Rear Outrigger Type | One Stage Swing-out<br>Full Spread Width 7,800mm          |

## ■ PUMP SPECIFICATIONS

|                   |                      |
|-------------------|----------------------|
| Maximum output    | 150m <sup>3</sup> /h |
| Concrete cylinder | Φ230×2100mm          |
| Stroke per minute | 27                   |
| Concrete pressure | 72bar                |
| Hopper Capacity   | 600Liter             |
| S-Valve           | Φ230×Φ180            |
| Main pump         | A4VG125×2            |

THE ABOVE SPECIFICATIONS ARE SUBJECT TO CHANGE WITH OR WITHOUT PRIOR NOTICE